

Grafice

Cum se introduc imagini in latex

- `\usepackage{graphicx}`

```
\begin{figure} [htbp]
  \centering
  \includegraphics [scale=0.40] {all.jpg}
  \caption{Explica\c tie figur\u a.}

  \label{fig:demo1}
\end{figure}
```

Doua imagini alaturate

```
\begin{figure} [htbp]
  \centering
  \includegraphics [width=0.48\textwidth] {l2f1a.png}
  \includegraphics [width=0.48\textwidth] {l2f1b.png}
  \caption{Prima noastr\u a anima\c tie!}
  \label{fig:l2f1}
\end{figure}
```

Forma finala

```
\begin{figure}[h]  
  \centering  
  \includegraphics[width=0.25\textwidth]{mesh}  
  \caption{a nice plot}  
  \label{fig:mesh1}  
\end{figure}
```

Sfat ...imagini

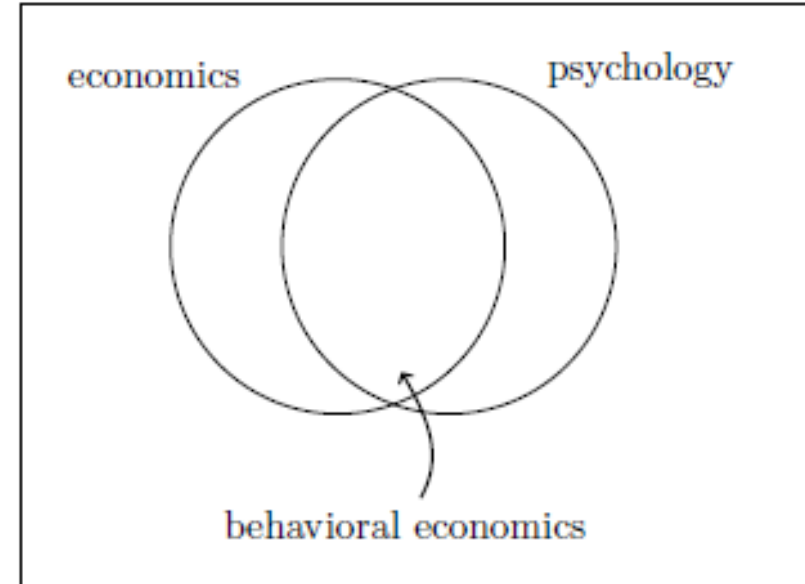
- O practica buna este sa tineti figurile intr-un subdirector separat(aici denumit images)

```
--  
\begin{figure}[!ht]  
\begin{center}  
\includegraphics[width=3.5cm]{images/su1.jpg}  
\includegraphics[width=3.5cm]{images/mou1.jpg}  
\caption{Solutia numerica  $t=0.5/\pi^2$ ,  $N=40$ ,  $CFL=0.1$ ,  $\beta=10$ ,  $\lambda=25$ ,  
 $\tau=0.001$  si cu functia monitor  $M_1$ . }  
\label{mou1}  
\end{center}  
\end{figure}
```

Creare immagini

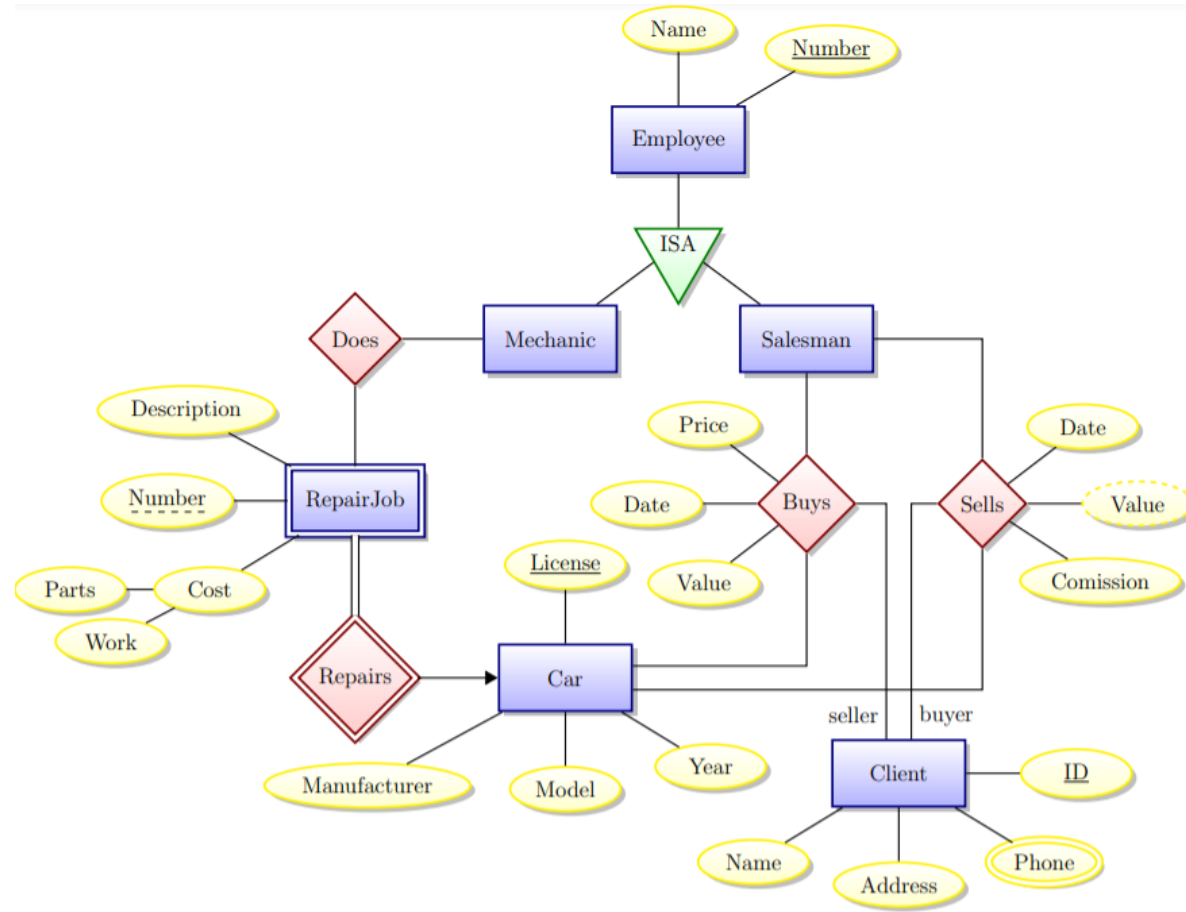
- Tikz

```
\begin{tikzpicture}
  \node[circle,draw,
        minimum size=3cm,
        label=120:{economics}]
    at (0,0) {};
  \node[circle,draw,
        minimum size=3cm,
        label=60:{psychology}]
    at (1,0) {};
  \node (i) at (0.5,-1) {};
  \node at (0.6,-2.5)
    {behavioral economics}
    edge[->,thick,
         out=60,in=-60] (i);
\end{tikzpicture}
```



Creare immagini

<https://texample.net/tikz/examples/tag/diagrams/>



<https://texample.net/media/tikz/examples/PDF/computer-science-mindmap.pdf>

